



West Ham Park

Registered Charity

Play for younger children and toddlers

- Younger children need a quiet area for play, so they are not overwhelmed by some of the active play by older children. At the same time toddlers like to challenge themselves and test their boundaries, especially with older siblings.
- Their area of play will have smaller equipment & many textures integrated within the environment such as textured surfacing, planting, grass mounds with tunnels to crawl & stepping stones.
- Some of the equipment will be close to the more active play area to provide an opportunity to test their boundaries.



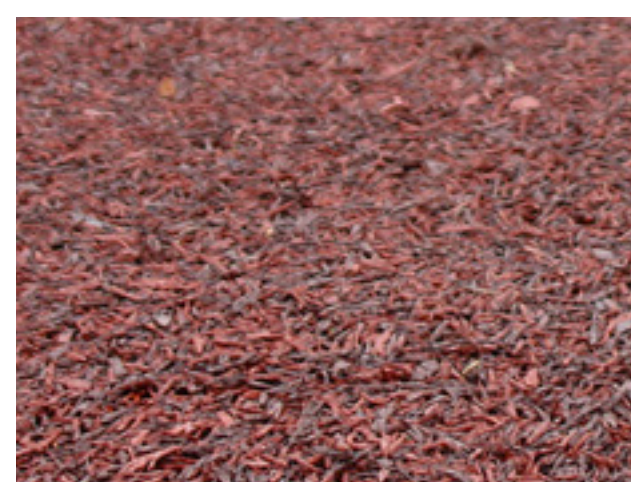
Play for older children

- Older children need more active play area as well as a space to meet their friends.
- Higher and bigger equipment that will challenge their abilities will be ideal for older children e.g. Large rope climbing equipment
- Equipment will be designed so it can be enjoyed by children of all abilities. E.g. ground level trampoline, climbing equipment with ramps. Basket swings and multi swings will allow groups of kids to play together.



Materials

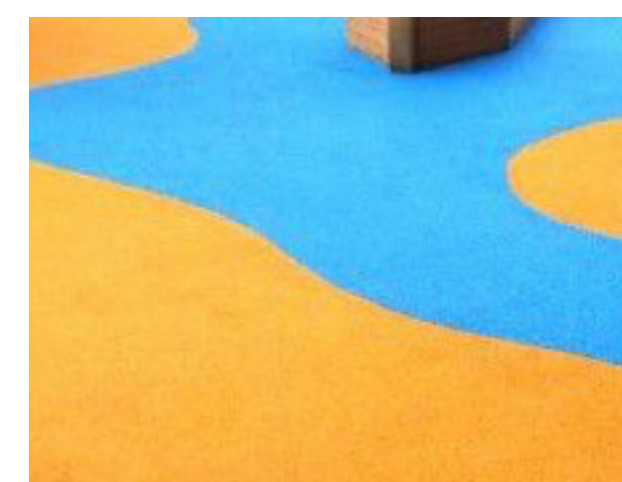
A variety of materials will be used for their textural quality.



Textured rubber mulch



Sand/gravel



Rubber mulch



Play bark

West Ham Park Playground Consultation

23 June - 21 July 2018

The playground has been a important part of West Ham Park since it was installed in 1937. The last full refurbishment was in 1986, when all the equipment was replaced and a new safety surface added.

The playground has been well-loved over the years and it needs updating to reflect changes in play design and modern safety standards. Here are some ideas we're exploring.



Natural play

There will be grassy areas of the playground for quiet play. Natural materials like bark mulch, logs and boulders will stimulate passive play. A playhouse and locomotive will provide for role play. Climbable stacked boulders will replicate the 'Cairn' on site.



Imaginative play

Taking inspiration from Dr Fothergill's collection of international rare plants in his botanical garden, an 'Explorer ship' with wooden sculptures of giant trees and plant details to connect with Fothergill's plant collection and allow for imaginative play, preserving the history of West Ham Park.



Places to meet

There will be benches around the playground for relaxing and meeting friends. There will also be an area with picnic benches, bins and fabric sails for shade during sunny spells.

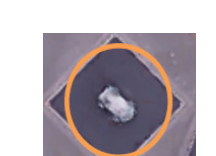
Aerial view of current playground



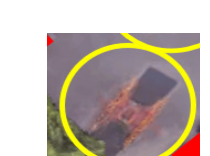
Key



Red cross - equipment to be removed and replaced



Orange - items that may need replacement



Yellow - items that will remain in the new plan



Red question mark Lido - 3 options being considered

Water play

The children's paddling pool is a well used and loved feature of West Ham Park. During 2017 948 visitors used the pool; it was open for 33 days, however this was only 34 % of the season and 9% of the year as a whole. Bad weather and issues with the tile surfacing cause it to be closed for 37 days during the May - September season.

During the winter months the pool and the whole area is closed, becoming a large unused space in the very busy playground. We are therefore investigating whether this is the best option for water play in the park and are presenting two alternative options.

- Water play using interactive equipment like water screws, hand pumps and water tables, which could be used for longer periods of the year. Water in both cases could be filtered and recycled. (Option 2)
- A splash pad with water jets and sprays could be fitted. The splash pad would have naturalistic landscape which will allow for imaginative play even in winter months. (Option 2)



Consultation details

From 23 June – 21 July, the plans for the project will be on display at the play ground. Staff will be onsite to discuss our the project and answer your questions on :

- **27 June from 2pm to 4pm at the Playground**
- **4 July from 4pm to 6pm at the Playground**
- **14 and 15 July from 12 until 7pm at the Bringing Communities Together Event (located on the football pitches)**

Head down to one of our stalls and talk to a member of the project team or have you say by completing our survey, you can access the link to the survey via Twitter [@WestHamParE7](#).

You can also contact the park on 020 8472 3584 or parks.gardens@cityoflondon.gov.uk